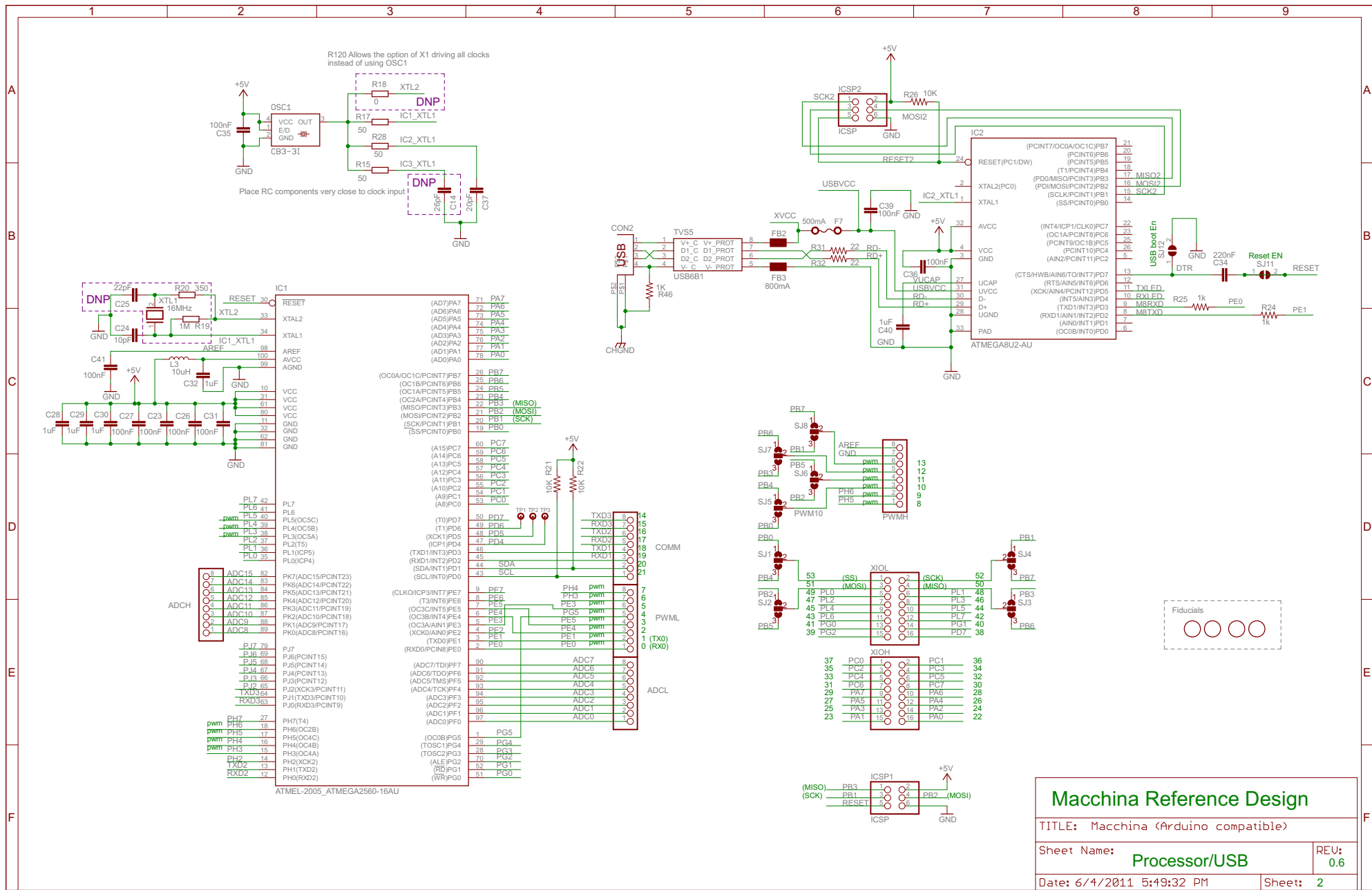


Place optional ODB2 Interfaces on PCB Bottom

Place TVS parts close to connector on PCB Bottom

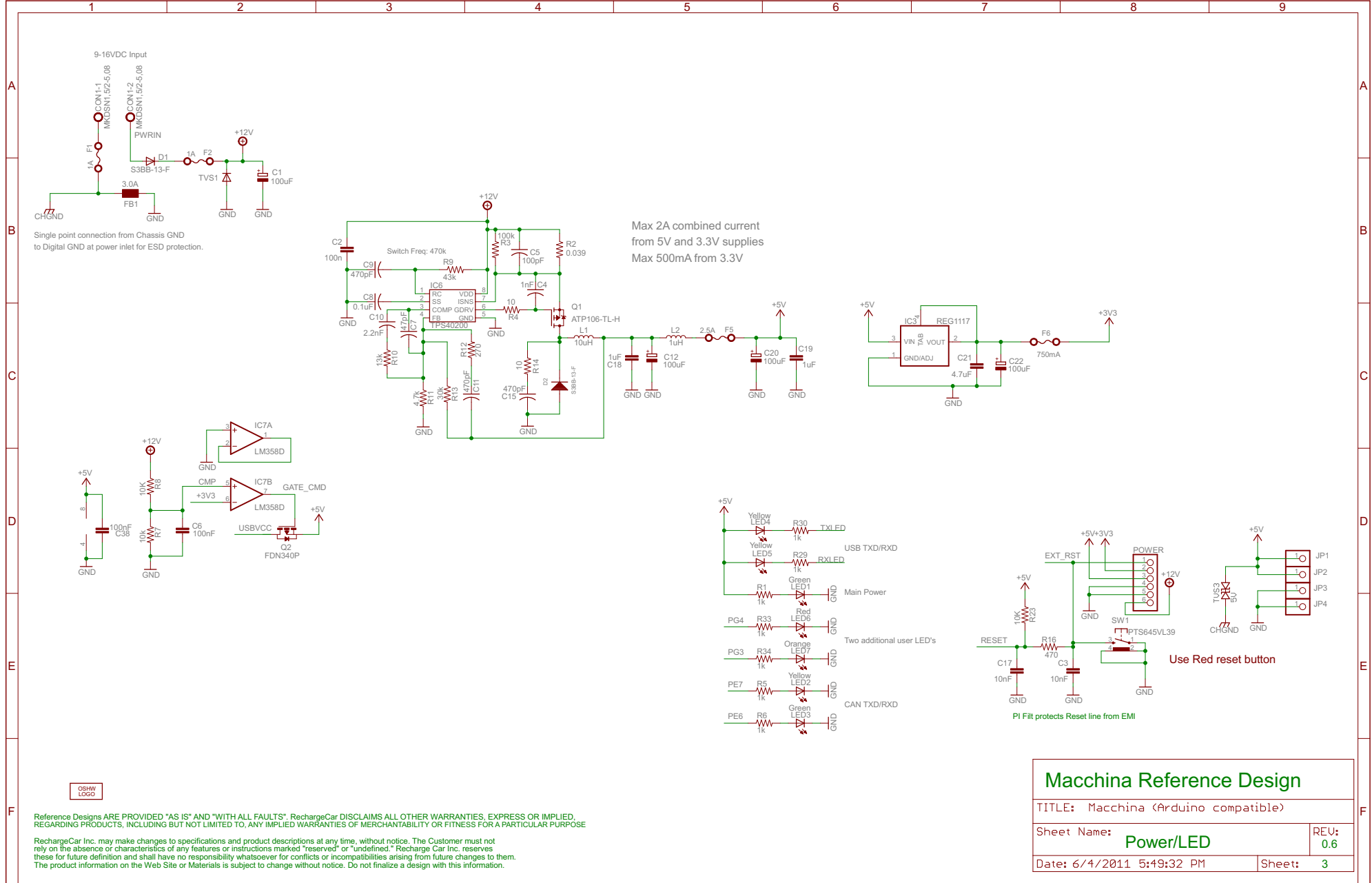
Macchina Reference Design	
TITLE: Macchina (Arduino compatible)	
Sheet Name:	ODB2 IF/Protection
	REU: 0.6
Date: 6/4/2011 5:49:32 PM	Sheet: 1



Macchina Reference Design

TITLE: Macchina (Arduino compatible)

Sheet Name: Processor/USB	REU: 0.6
Date: 6/4/2011 5:49:32 PM	Sheet: 2



Single point connection from Chassis GND to Digital GND at power inlet for ESD protection.

Max 2A combined current from 5V and 3.3V supplies
Max 500mA from 3.3V

Use Red reset button

Macchina Reference Design		
TITLE: Macchina (Arduino compatible)		
Sheet Name: Power/LED	REV: 0.6	
Date: 6/4/2011 5:49:32 PM	Sheet: 3	



Reference Designs ARE PROVIDED "AS IS" AND "WITH ALL FAULTS". RechargeCar DISCLAIMS ALL OTHER WARRANTIES, EXPRESS OR IMPLIED, REGARDING PRODUCTS, INCLUDING BUT NOT LIMITED TO, ANY IMPLIED WARRANTIES OF MERCHANTABILITY OR FITNESS FOR A PARTICULAR PURPOSE

RechargeCar Inc. may make changes to specifications and product descriptions at any time, without notice. The Customer must not rely on the absence or characteristics of any features or instructions marked "reserved" or "undefined." RechargeCar Inc. reserves these for future definition and shall have no responsibility whatsoever for conflicts or incompatibilities arising from future changes to them. The product information on the Web Site or Materials is subject to change without notice. Do not finalize a design with this information.